



# RFID Solutions

Real-Time Locating and Tracking  
with Zebra & Peak Technologies



Premier  
Solution Partner

## About Peak

---

For over 35 years, Peak Technologies has been at the forefront of providing end-to-end enterprise mobility, managed services, printing and mobile data capture solutions for performance-driven organizations focused on the optimization of supply chain and field-based business processes.

Peak Technologies' in-depth industry-specific experience, state-of-the-art solutions and managed services, and exemplary customer support provide transformational business solutions and results that deliver greater ROI and outstanding value.

Peak Technologies serves as a trusted business partner for some of the world's largest companies, while also supporting local and regional customers with an extensive coverage footprint throughout North America and Europe.

Contact us today to learn more and start achieving greater visibility, connectivity and mobility in your business.



**PEAK**  
TECHNOLOGIES

888-492-6346  
[www.peaktech.com](http://www.peaktech.com)  
[info@peaktech.com](mailto:info@peaktech.com)



Premier  
**Solution Partner**

# Technologies for the RFID Revolution

Around the world, radio frequency identification (RFID) is transforming the way we track, trace, and manage products and assets across an array of industries.

RFID replaces manual, line-of-site barcode scanning with remote locating and tracking, using labels and tags read remotely via handheld or fixed readers. This allows items, medical patients, and even entire pallets or racks of products and materials to be identified, located, and tracked instantaneously and in real time. The end result is unprecedented tracking efficiency, inventory accuracy, and real-time visibility into the status and location of every tagged asset.

With RFID, decision makers are able to access real-time data and insights on the status of key processes, assets, and equipment. And workers can achieve greater productivity and deliver better service quality by automating and streamlining business-critical workflows.

Given these benefits, it's not surprising that the transformative power of RFID is enabling improved visibility and performance across a range of industries:

- Retail
- Manufacturing
- Warehousing and Distribution
- Healthcare

It's also easier and more affordable than ever before to make the move into RFID, thanks to both efficiencies in scale from increased adoption and continuing innovations from RFID leaders such as Zebra Technologies.

As a pioneer in RFID, Zebra offers field-proven and cost-effective solutions for every application and tracking need, including RFID printers, labels, tags, cards, and handheld or fixed RFID readers.

And as a Zebra Premier Solution Partner, Peak is fully certified and authorized to sell, integrate and implement complete Zebra RFID solutions tailored for your business.



Around the world, radio frequency identification (RFID) is transforming the way we track, trace, and manage products and assets across an array of industries.





## Visibility and Traceability for Smarter Manufacturing

Zebra has been on the forefront of RFID technology for more than a decade, with proven RFID solutions that provide real-time track-and-trace capabilities along with work-in-process tracking and complete visibility into the manufacturing supply chain.

Zebra solutions enable Industry 4.0 and smarter factory operations by allowing materials and products to be identified, tracked, and located automatically at any stage of the supply chain—from the receiving dock to the warehouse, plant floor, and beyond.

### Benefits of RFID in Manufacturing

#### Traceability and Quality Assurance

- Complete supply chain traceability
- Pinpoint locationing and tracking of tagged assets
- End-to-end tracking throughout the supply chain
- Automated work-in-process tracking
- Accurate identification and tracking for quality assurance

#### Warehousing

- Real-time and accurate inventory
- Fully automated data collection
- No line-of-site or item-by-item scanning required
- Reduced time required for inventory counts
- Ability to read multiple RFID tags simultaneously

#### Asset and Facility Management

- Accurate asset maintenance records
- Automated alarms and alerts for required service
- Reduced downtime through optimal maintenance
- Improved asset sharing and utilization
- Decreased time searching for assets

### Suggested Devices for Manufacturing:



**ZT600 Series**  
RFID Printers



**FX9600**  
Fixed RFID Reader



**AN440**  
RFID Antenna

# Accurate and Real-Time Inventory and Logistics

The automated data collection and real-time locating capabilities of Zebra RFID technologies are helping warehouses as well as transportation and logistics operations achieve unprecedented productivity and efficiency.

Zebra's RFID solutions automate and streamline every aspect of warehousing and distribution—from receiving, put-away, and inventory counts to picking and packing, staging, cross docking, shipping, and more.

## Solutions for Smarter Warehousing and Distribution

### Receiving, Put-Away, and Replenishment

- Improve receiving time by up to 90%<sup>1</sup>
- Identify, verify, and sort received shipments
- Direct receivables to the right warehouse locations

### Inventory and Materials Management

- Know the status and location of every item in real time
- Automatically track every asset in your supply chain
- Count as many as 20,000 or more items per hour<sup>1</sup>
- Reduce cycle count times by up to 96%<sup>1</sup>

### Picking, Packing, and Staging

- Improve picking and shipping accuracy by 80%<sup>1</sup>
- Automate and streamline picking, packing, and verification
- Eliminate errors with pinpoint identification and accuracy

### Cross-Docking and Shipping

- Ensure items are on the right truck, in the right order
- Maximize trailer space usage with intelligent loading
- Eliminate manual shipping verification processes
- Maintain complete traceability and chain of custody

## Suggested Devices for Warehousing & Distribution:



**ZQ630**  
Mobile RFID Printer



**MC3300-R**  
Long-Range Handheld  
RFID Reader

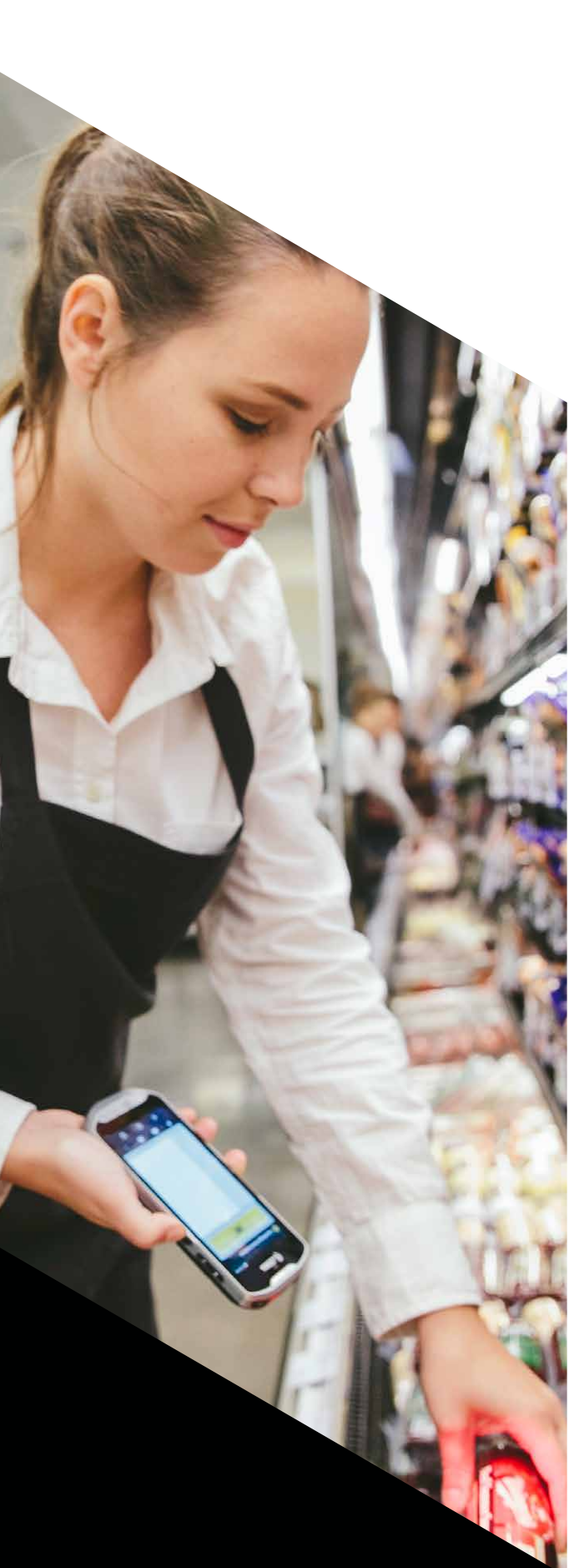


**ATR7000**  
RTLS Reader



<sup>1</sup>Melanie Nuce, "10 Ways RFID Is Powering Retail Inventory Management," *SCW Magazine*, 2016, <http://www.scw-mag.com/editors-blog/641-10-ways-rfid-is-powering-retail-inventory-management>.





## Item-Level Tracking for Better Retail Performance

Today's retail operations require on-demand responsiveness and product availability, and Zebra RFID solutions are making both possible. Zebra RFID technologies help retailers automate inventory, reduce out-of-stocks, and make sure the right products are in the right place for in-store shipping and e-commerce fulfillment.

From the warehouse or distribution center to the back of store, sales floor, and point of sale, RFID is transforming retail with the power of automated and remote locating and tracking.

### Benefits of RFID for Today's Omnichannel Retail

#### Customer-Centric Fulfillment

- Reduce out-of-stocks and ensure accurate inventory of every product
- Easily maintain the right product mix with real-time insights
- Streamline management of every sale, pickup, delivery, and return
- Lower inventory costs with automated tracking and transaction insights
- Maximize sales with complete item-level and trend visibility

#### In-Store Operations

- Item-level tracking to easily stock, showcase, and replenish products
- Automatic sensing and recording of item location, status, and movement
- Improved store efficiency with automated tracking and locating

#### Actionable Analytics

- Unparalleled visibility into every aspect of retail operations
- Automated item-level data capture for better business insights
- Easy conversion of data into actionable intelligence

### Suggested Devices for Retail:



**RFD8500 Sled**  
with TC55 Touch  
Computer



**DS9908-R**  
Hybrid RFID Imager



**ZQ511**  
RFID Mobile Printer

# Accurate Tracking and Monitoring for Better Patient Care

Better healthcare outcomes begin with optimal patient care and safety, and Zebra RFID solutions are helping caregivers provide both with accurate patient identification and monitoring.

RFID tracking allows providers to identify patients, optimize care workflows, and ensure the right care is delivered, at the right time, by automatically collecting and analyzing patient and care data in real time.

With automated RFID identification and tracking, providers can know each patient's status, location, and treatment data, as well as maximize healthcare asset utilization to achieve positive care outcomes.

## Benefits for Hospitals and Healthcare Providers

### Better Patient Safety

- Identify and locate patients with flawless accuracy
- Automatically track and document patient status and care
- Ensure the right medications and care are matched to each patient

### Reduced Time to Treatment

- Ensure patients are treated as quickly as possible
- Track incoming and admitted patients automatically
- Analyze treatment and location data to optimize workflows

### Improved Patient Monitoring

- Reliably track cognitively and physically impaired patients
- Prevent falls and injury by continuously monitoring patient location
- Ensure proper mother-to-infant matching for optimal safety

### Better Asset Utilization

- Tag and track equipment for easy locating and sharing
- Leverage asset data to maximize availability and utilization
- Document equipment status, usage, and maintenance

## Suggested Devices for Healthcare:



**ZD621-R**  
Desktop RFID Printer



**DS9908HD-R**  
Coreder Hybrid RFID  
Imager for Labs



**TC52-HC**  
Touch Computer





## Supporting Products

---



### Fixed Readers

Automated tracking of items at rest or moving through your supply chain.



### Reader Antennas

High-throughput, high-capacity communications for fixed RFID readers.



### Handheld Readers

Mobile and handheld RFID readers for automated, remote asset tracking.



### RFID Printers

Fast, reliable RFID label and tag printing for total asset visibility.



### RFID Labels and Supplies

Stock RFID labels and tags designed meet any application or budget.





# Fixed Readers, Antennas, Setup Wizard and Software

Next-level inventory visibility

Make sure the right asset is in the right place at the right time with Zebra's complete RAIN RFID portfolio—the deepest and widest in the industry.

## Fixed RAIN RFID Readers and Infrastructure

Achieve maximum asset visibility across your enterprise. Get even more insight with Zebra's RFID Array Reader which provides visibility into the pinpoint location of all of your tagged assets, including if they are on the move.



### ATR7000 RTLS Reader\*

Redefine operational efficiency with superior, affordable real-time locationing

\* Not available in EMEA



### FX9600 Fixed RFID Reader

Top-of-the-line performance for high-volume and rugged environments



### FX7500 Fixed RFID Reader

The small enterprise reader, big on speed and accuracy



### ST5500 Transition RFID Reader

Know what's entering and exiting your facility

	Fixed RFID Readers			
	ATR7000	FX9600	FX7500	ST5500
Manufacturing	•	•		•
Retail		•	•	•
Healthcare		•	•	
Warehouse	•	•		



## RFID Reader Software

You don't have to be an expert to set up and optimize Zebra RAIN RFID readers. Our tools help you every step of the way—easily configure and deploy your RFID readers without complications or delays.



### 123RFID Desktop

Make RFID deployments as easy as 1, 2, 3

Our free, intuitive wizard presents easy-to-understand options in drop-down menus, radio buttons and sliders. Use built-in help and how-to-videos to find answers to your questions.



### 123RFID Mobile

Get RFID deployment mobility

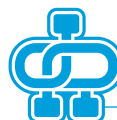
Leverage 123RFID mobility for more flexible deployment and easier access to our free, intuitive wizard.



### FX Connect

Lower IT burden, faster RFID implementation

Quickly and easily configure and deploy FX Series fixed RFID readers without the need for APIs or application development.



### Network Connect

Seamless, secure connections to programmable logic controllers (PLC's)

Connect Zebra FX9600 Fixed RFID Readers to the most widely used Industrial Ethernet protocols and other standard networks without additional conversion hardware.

## RAIN RFID Antennas

Quickly and accurately track inventory and assets. Our robust antennas offer the high performance and range needed for high traffic and precision.



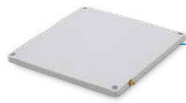
### AN440 RFID Antenna

Large area coverage in any environment



### AN480 RFID Antenna

Global flexibility for all enterprises



### AN510 Ultra-Rugged RFID Antenna

Ultra-rugged and low profile for use indoors and outdoors



### AN610 Slimline RFID Antenna

Sleek. Discreet. Rugged.



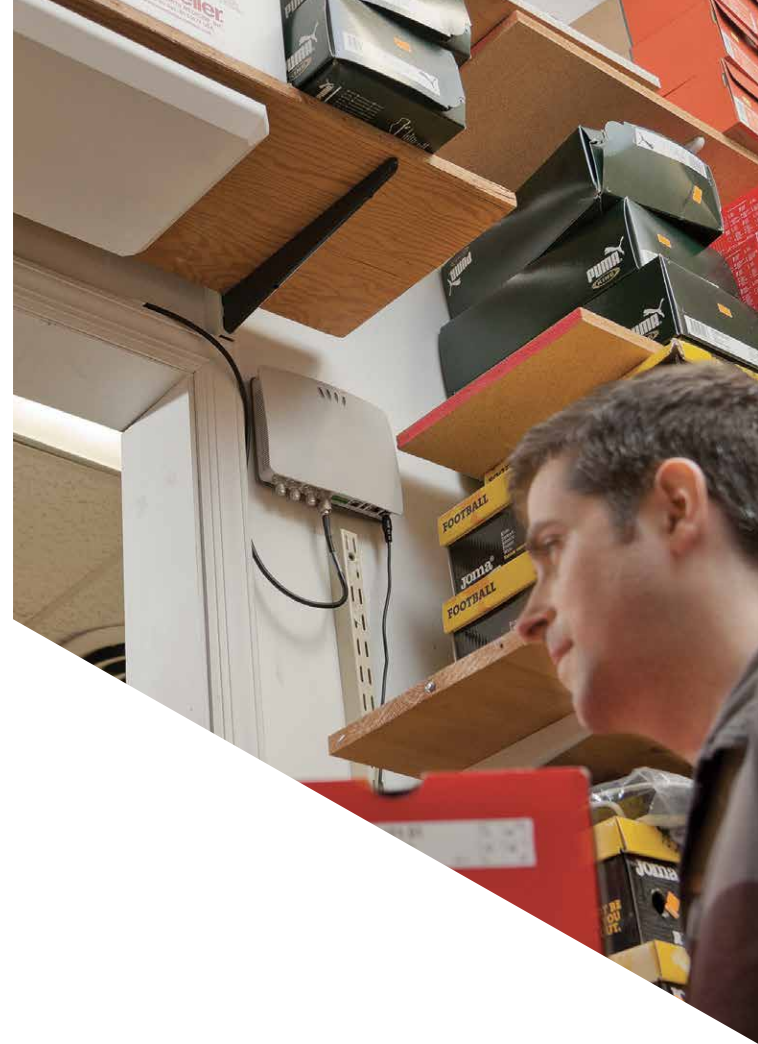
### AN620 Slimline RFID Antenna

Slimline, ultra-low profile

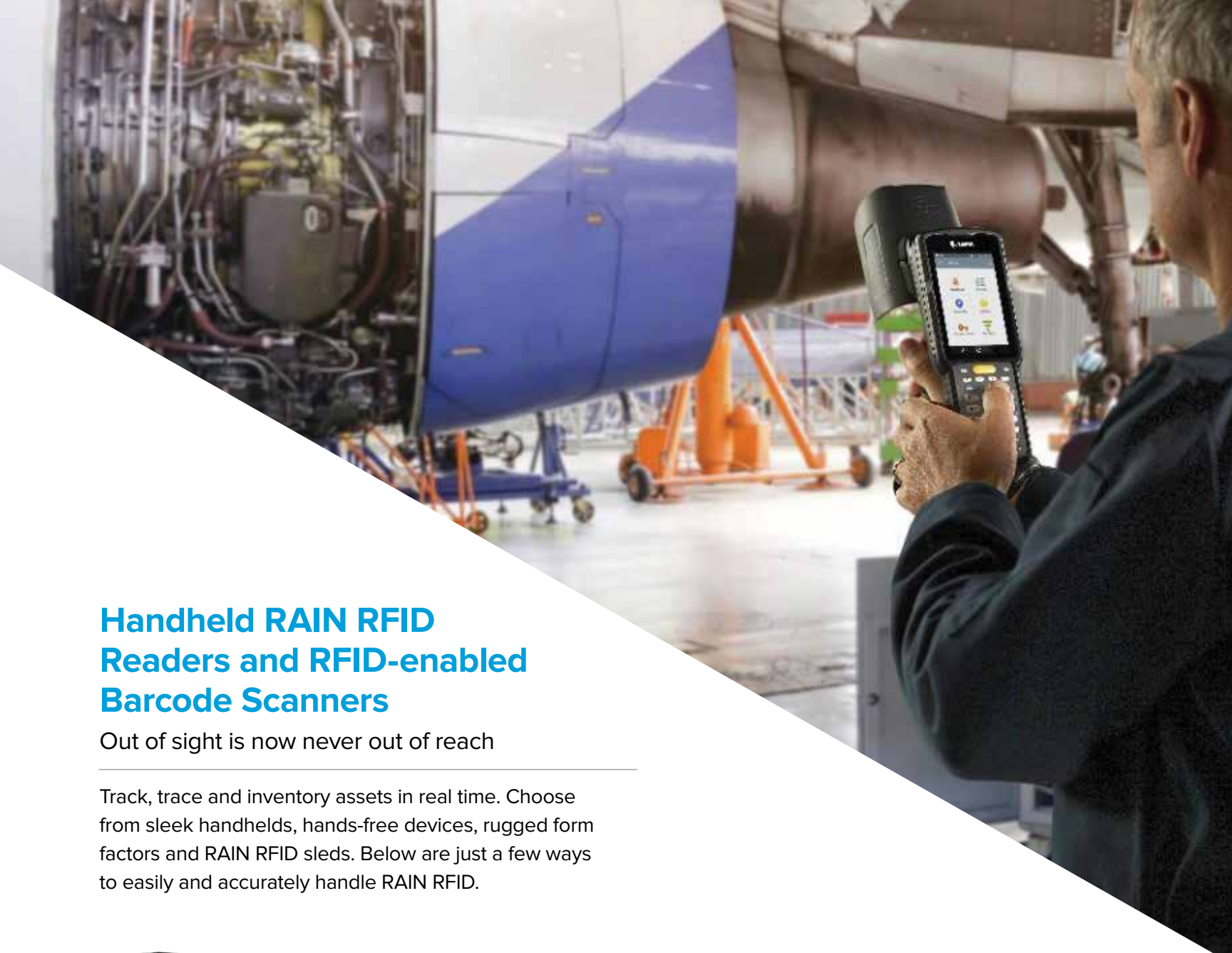


### AN720 RFID Antenna

Compact indoor/outdoor antenna for customer-facing environments



	RFID Antennas					
	AN440	AN480	AN510	AN610	AN620	AN720
Manufacturing	•	•	•	•	•	•
Retail			•	•	•	•
Warehouse	•	•	•	•	•	•



## Handheld RAIN RFID Readers and RFID-enabled Barcode Scanners

Out of sight is now never out of reach

Track, trace and inventory assets in real time. Choose from sleek handhelds, hands-free devices, rugged form factors and RAIN RFID sleds. Below are just a few ways to easily and accurately handle RAIN RFID.



### MC3330xR Integrated UHF RFID Reader

Comfort, speed and ease-of-use RFID read performance

Bring a new level of comfort, speed, ease of use and accuracy to your RFID applications. Superior RFID read performance and receiver sensitivity enable lightning-fast and accurate capture of even the most challenging RFID tags. Built for maximum uptime with large touchscreen and physical keypad, yet lightweight with the right ergonomics for all-day comfort.



### MC3390xR Integrated Long-Range UHF RFID Reader

Built for your semi-industrial environments

Access a new level of efficiency and accuracy for inventory management, order fulfillment, cross-docking and more. The integrated long-range antenna supports a best-in-class RFID read range, coupled with Zebra's high-performance ASIC radio technology to deliver higher throughput, so inventory counts can be accomplished more quickly and accurately.





### RFD8500 Bluetooth® RFID Sled

Turn your computer into an RFID reader

Pair the Bluetooth®-enabled RFD8500 Sled with Zebra's TC51/52/56/57/TC52x/TC57x, an Android™ or iOS® smartphone or a laptop or desktop computer, and you're ready to read RFID tags. The RFD8500 is device- and OS-agnostic.



### RFD40 RFID Sled

Get RFID agility for the future

Work more efficiently. Optimize cycle-counting with industry-best read rates, read range and increased battery capacity. Most importantly, it connects to current and future Zebra mobile computers, so you get a future-proof device.



### DS9908R RFID Scanner

Bring RFID to your POS or lab

Close the supply chain loop. Read RFID-tagged merchandise at the point of sale for up-to-the-minute inventory tracking, or RFID tags on laboratory assets and specimen samples for improved laboratory management. The DS9908R is a hybrid handheld/hands-free scanner that offers best-of-breed barcode scanning with RFID reading capabilities in a single platform.

#### Handheld RFID Readers and RFID-Enabled Barcode Scanners

	MC3330xR RFID Reader	MC3390xR RFID Reader	RFD8500 Bluetooth RFID Sled	RFD40 RFID Sled	DS9908R RFID/1D/2D Reader
<b>Manufacturing</b>	•	•	•		•
<b>Retail</b>	•		•	•	•
<b>Healthcare</b>			•	•	•
<b>Warehouse</b>	•				



## RAIN RFID Printer Encoders

Accurate and scalable RFID encoding

Your solution depends on reliable data. Zebra offers the industry's widest range of printers that accurately encode RAIN RFID labels, tags and cards where and when you need them. Build your solution on RFID data you can trust.

	RFID Printer Encoders			
	ZT600, ZT400 Industrial Printers, ZE500 Print Engine	ZQ630, ZQ521 and ZQ511 Mobile Printers	ZXP Series 7, ZC300 Series Card Printers	ZD621R Desktop Printers
<b>Manufacturing</b>	•	•		
<b>Retail</b>	•	•	•	•
<b>Healthcare</b>		•	•	•
<b>Warehouse</b>	•	•		•





## ZT600, ZT400 Industrial Printers and ZE500 Print Engine

Intelligent and industrial brawn

These printers and innovative OEM print engine keep your operations running 24/7 in the harshest environments and the most demanding RFID applications.



## ZQ630, ZQ511 and ZQ521 RFID Mobile Printers

Portable, Convenient and Efficient

Our premium mobile printers can print at the point of application, making them a convenient and efficient solution. They are friendly to workers and easy for IT to integrate and manage.



## ZXP Series 7 and ZC300 Series Card Printers

Capabilities with credentials

Whether you need high performance or a compact size with groundbreaking simplicity, Zebra UHF card printers deliver.



## ZD621R Desktop Printer

Bring RFID printing to your desktop

Premium features, maximum performance and unmatched security in an easy-to-use compact printer.





# Certified Supplies

The perfect match for your RAIN RFID printer

Using inlays from leading manufacturers, as well as our own Zebra-branded inlays, Zebra offers 50+ labels in stock. We can also create a custom solution for you—with just about any thermal material and inlay to meet the requirements of your unique application. Designed and tested with Zebra printers and RAIN RFID readers, our Certified Supplies ensure high performance.

### General purpose

- Paper and synthetic labels, designed for use with standard applications
- Best for non-metallic surfaces, plastics or corrugate
- ZBR2000 Zebra-branded inlay for longer read ranges and faster tag acquisition

### Advanced

- Paper and synthetic labels that offer a higher level of readability performance than our general purpose labels
- ZBR4000 and ZBR4001 Zebra-branded advanced UHF RFID inlays offer a higher level of performance than general purpose inlays

### Specialty

- Unique solutions and designs created to maximize read range for metal and challenging surfaces



## Print Confident. Print Secure. Print Zebra.

One of the largest offerings of in-stock and ready-to-ship RAIN RFID labels



### Outstanding Performance

The latest chip technology and proprietary inlays provide enhanced performance.



### Reliable Consistency

The same label material used from order to order results in consistent print and adhesive performance every time.



### RFID Solution Expertise

As the developer of RFID readers and printers, Zebra can recommend the labeling solution that optimizes the performance of each RFID solution.



### Testing Capabilities

With our Voyantic test equipment, we can identify the optimal inlay for the surface being labeled to ensure maximum read ranges.



### In-House Manufacturing Capabilities

Zebra's state-of-the-art presses and RFID manufacturing equipment enables us to meet your RFID supplies need quickly.



### The Right Solution for Your Use Case

With over 300 certified combinations of direct thermal and thermal transfer materials and access to inlays from the leading providers, we can deliver the optimal solution for the surface to maximize read performance.



## Z-Band Direct Thermal RFID Wristbands

- Z-Band Direct RFID SR in our classic shape is optimal for use when in close proximity to the reader
- Z-Band UltraSoft RFID LR features one of the softest materials on the market. The flag design and special inlay enables longer read ranges.



## RFID Cards

- One of the world's first passive RFID cards to provide a read range of up to 50 feet
- 128 bits of EPC memory
- 512 bits of user memory
- 96 bits of read-only TID memory

# Get a better read on your business

## With RFID Solutions from Zebra & Peak



Even if you're using RFID devices, unless you connect them all, you'll have plenty of operational disconnects. Those profitability-killing communication gaps hurt your real-time asset visibility, utilization and control. On the other hand, a fully-integrated RFID solution will streamline your operations and inspire more intelligent decision-making via faster, more accurate data collection. Then, your employees will know what they need to know, when they need to know it.

### Make Your Business as Smart and Connected as Possible

Discover the end-to-end simplicity of Zebra UHF Passive RFID Solutions.



#### Improve ROI

in retail, manufacturing, transportation & logistics and healthcare, with numerous cross-industry applications.



#### Ensure Hardware and Data Interoperability

through an industry-leading, high-performing portfolio of readers, printers, supplies, software, services and solutions.



#### Control What's Inside Your Business

to elevate customer service and impact sales.



#### Implement Better Asset Management,

while increasing your inventory accuracy and decreasing operating costs.



#### Cover Every RFID Need

from devices to systems to deployment.



#### Access World-class Services with a Global Reach

that maximize uptime and provide the highest visibility.

Ready to get a better RFID read on your business?



**PEAK**  
TECHNOLOGIES

888-492-6346  
www.peaktech.com  
info@peaktech.com



ZEBRA

Premier  
Solution Partner



# Make the Move to Real-Time Tracking and Locationing: Join the RFID Revolution



**PEAK**  
TECHNOLOGIES

888-492-6346  
[www.peaktech.com](http://www.peaktech.com)  
[info@peaktech.com](mailto:info@peaktech.com)

